

THE ART OF HEALING



Pictured (left to right) artist, Jodi Reeb-Myers; Lori Peterson, RN, St. Francis Chief Operating Officer; and art and design consultant Victoria Hovde, near one of Reeb-Myers' pieces commissioned for St. Francis.

Art Offers Everlasting Recognition of Generous Donation

In recognition of the Shakopee Mdewakanton Sioux Community's (SMSC) gift of \$500,000 to St. Francis, a new piece of artwork by South Dakota artist JoAnne Bird is now displayed near the waiting room in the St. Francis Emergency Department. Sundance represents a Native American ritual healing dance.



A member of the Sisseton Wahpeton Oyate, Bird was recommended by Leonard Wabasha of the SMSC.

In addition to painting, Bird is an accomplished sculptor working in bronze. Her sculptures can be found throughout the



Sundance by artist JoAnne Bird

United States and Europe. Among them are works of the Indian leaders "Shakopee" located in the Minnesota State Capital Building.

The SMSC's gift supported the hospital's expansion project, which included the renovation of the Emergency Department. A regional leader in emergency care, St. Francis was approved this June as a Level III Trauma Center by the Minnesota Statewide Trauma System of the Minnesota Department of Health. St. Francis is the second Allina Hospital to receive this designation, ensuring it has the expertise and resources to provide quality care to severely injured patients. Trauma volume is expected to increase significantly as Scott and Carver Counties continue to grow by almost 1,000 new residents monthly. The St. Francis Emergency Department is staffed 24/7 with board certified emergency medicine physicians.

Donors Tour New Art

Despite ominous weather, an early June donor 'thank you' event went on without a hitch. The gathering for Foundation donors provided an opportunity for guests to tour new artwork in the Care North conference rooms. Attendees celebrated with a brief program and refreshments.

Led by art and design consultant Victoria Hovde, St. Francis has been engaged in a healing arts program since the new hospital was built in 1996. Hovde integrated art from the former hospital throughout the campus. The new commissioned pieces for the conference rooms reflect the hospital's values and bear the same name — Joy, Hospitality, Partnership, Justice, Stewardship and Respect. Artist, Jodi Reeb-Myers, describes each piece of art and her inspiration for each individual value.



Artist Reeb-Myers explains that her concepts of Stewardship, for example, illustrate that by being efficient, making wise decisions and minimizing waste, everyone has their place in God's world. The nest with eggs represents a basket of abundance being cared for. The clock symbolizes using time wisely and assisting others. The multiple buildings side-by-side depict different but equal, people, departments and work spaces, all balanced and working as one. Outreaching hands convey recycling and giving freely with joy. By taking care of oneself and nature, we return the gifts we receive by being a steward of all things.

ST. FRANCIS FOUNDATION 2008 EVENT HIGHLIGHTS

SUNDAY, AUGUST 17

St. Francis Cancer Center Racecar Participates in ASA Midwest Tour Event
Raceway Park in Shakopee

SATURDAY, SEPTEMBER 27

St. Francis Cancer Center Racecar Participates in Fundraising Event For St. Francis & ALS
Elko Speedway in Elko/New Market

SATURDAY, OCTOBER 25, 6 P.M.

St. Francis Foundation Gala
Oak Ridge Hotel and Conference Center in Chaska

For information on any of the events above, contact Joan Fawcett, Senior Development Associate, at (952) 403-2072 or by e-mail at joan.fawcett@allina.com.

Enclosed is my/our gift of:

\$1000 \$500 \$100 \$50 \$25 Other: \$ _____

Please make checks payable to St. Francis Foundation

Donor name: _____

(as you would like to be recognized)

Address: _____

City: _____ State: _____ Zip: _____

Phone: _____ Email: _____

Please charge my gift to:

American Express MasterCard
 Discover VISA

Account # _____ Exp. _____

Name on card: _____

Address: _____

City: _____ State: _____ Zip: _____

I have included, or
 I am interested in including the St. Francis Foundation in my will/estate plan.
My employer _____ will match my gift.

ST. FRANCIS FOUNDATION FUNDING PRIORITIES

Technology Healing Environment
 General Fund Other: _____

Your gift is greatly appreciated and tax deductible.

Return to: St. Francis Foundation
1455 St. Francis Avenue
Shakopee, MN 55379-3380

GARDENS GROW AT ST. FRANCIS THROUGH GENEROSITY



A new Atrium Garden will soon be complete thanks to employee campaign dollars, the St. Francis Auxiliary and supporters of the 2007 Foundation gala. The beautiful new space is located outside of the atrium toward the pond and includes a water feature, outdoor seating patio and soon, a labyrinth for prayer and meditation. Jordan-resident Herb Baldwin served as the landscape architect and donated many hours of service for both the Atrium and Meditation Garden projects. The gardens compliment the hospital's meditation room, chapel and staff renewal rooms, the Legacy Wall and distinctive artwork, all which support St. Francis' mission to heal the mind, body and spirit.



(Left) Heather Chantry of Community Chest Racing, Inc., owns and manages the St. Francis Cancer Center Racecar. Driver Gordy Swanson (right) is joined by his wife, Renee, at the St. Francis Foundation's June golf tournament at Stonebrooke Golf Club.

St. Francis has entered the racing circuit thanks to Heather Chantry of Community Chest Racing, Inc.

The unique endeavor is raising awareness and support of the St. Francis Cancer Center. Driven by Gordy Swanson of Northfield, the St. Francis racecar can be seen at Raceway Park in Shakopee and in various events of the ASA Midwest Tour.

Heather (a breast cancer survivor) and her mom

CAUSE FORE CELEBRATION

The Foundation is pleased to announce the Title Sponsorship of Rahr Malting Co. for the 2009-2011 seasons of its Tee One for Hope Golf Tournament. The three-year pledge of \$60,000 will benefit cancer care at St. Francis. The gift builds on long-standing support from Rahr Malting and the Rahr Foundation, which began in 1953 when Rahr issued a community challenge grant to support the new hospital. The company's overall contributions to the hospital now total over \$325,000. A fifth generation family-owned company since 1847, Rahr's Shakopee site was built in 1935 and serves as its headquarters. It is the largest single-site malt facility in the world. Rahr's President and CEO, Gary Lee, is incoming chair of the St. Francis Foundation Board.

Gary Lee and Carley M. Stuber at the 2008 Tee One For Hope Golf Tournament. More than \$65,000 was raised at the 11th annual event in June, including over \$20,000 of in-kind donations and services. Proceeds will allow the St. Francis Cancer Center to create a warmer, more nurturing atmosphere for patients using the center's diagnostic imaging services, including its mammography exam and consultation rooms.



ST. FRANCIS RACECAR PARTICIPATES IN LOCAL EVENTS

discussed the endeavor prior to Audrey's passing in November from bone marrow cancer. They chose St. Francis as the recipient because of its community-based, Catholic mission and their ties to the hospital. Funds raised throughout the '08 season from t-shirt sales, donations, carnival games and more will be donated to the cancer center.

You can catch Swanson and the family-fun action Sunday, Aug. 17 at Raceway Park in Shakopee. A large crowd of St. Francis supporters is expected. On Saturday, Sept. 27, Swanson will race in a fundraising event for St. Francis and ALS at Elko Speedway. The ASA Midwest Tour and MN Challenge Series will also take part in the event. For photos, information, or to donate online, visit www.communitychestracing.com.



FUNDS FOR EXCELLENCE AWARDS FIRST GRANT

The St. Francis Foundation's Fund For Excellence (FFE) has awarded \$200,000 to support the development of a new Hospitalist Program at St. Francis. This is the first grant through FFE, a fund established in 2007 to ensure that assets are in place for St. Francis to rapidly respond to immediate and strategic opportunities to deliver better health care and sustain excellence into the future.

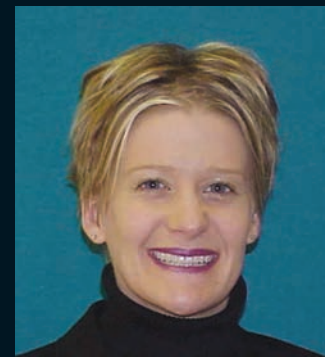
The Hospitalist Program will expand physician coverage by bringing on board generalist physicians to support surgical sub-specialists and medical sub-specialists, allowing for the most appropriate physicians at the bedside. The Foundation's substantial grant will help start the Hospitalist Program in 2008.

GALA REMINDER

Join the St. Francis Foundation at its 'Spirit of St. Francis' Gala Oct. 25 at Oak Ridge Conference Center in Chaska. KSTP TV anchor John Mason will emcee the 22nd annual gala event which will support diagnostic excellence at St. Francis to create and maintain a sophisticated and holistic diagnostic imaging experience for patients. The evening includes complimentary hors d'oeuvres and wine, martini bars, entertainment, dinner, live and silent auctions, as well as a brief program with the presentation of the annual Physician Touchstone Award. Last year's event raised nearly \$180,000 to support the healing environment at St. Francis, which includes a 2008 project that will enhance the Care South Pediatric Rooms and the creation of the new Atrium Garden.

Visit www.stfrancis-shakopee.com/gala for more gala event details and online registration.

A FOND FAREWELL



After four years of dedicated leadership, Carley M. Stuber will be leaving the St. Francis Foundation. Stuber has accepted a newly created position at Children's Hospital Foundation where she will develop a philanthropic strategy for complimentary alternative medicine, pain and palliative care, and art therapies. Stuber has been instrumental in rebuilding the Foundation and its board. Her devotion to developing philanthropic relationships and shaping the Fund for Excellence fundraising strategy has led to record contributions, as well as enhanced community commitment to St. Francis.

"Carley's dedication to our organization, her strategic vision, and her ability to serve as a leader has been evident throughout her four year tenure," says Michael Baumgarnter, President of St. Francis. A search is underway for a new executive director.

dedicated to supporting our growing communities